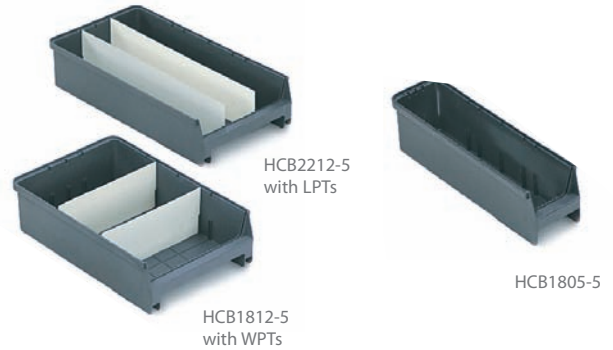


Carousel & Unit Dose Bins

Add efficiency to picking applications in a wide range of industries with Carousel and Unit Dose Bins

Carousel Bins are designed for easy picking in vertical and horizontal carousels. Offers rugged construction with wide open front for easy access. Unit Dose Bins are ideal for efficient dispensing and inventory control strips, orals and injectables. Bins fit on 36" wide shelves, 12" shelf depths or mount on Gravity Flow Rails. The GFR36-2SST is designed with 2" flange to securely accommodate 2" and 6" wide Unit Dose Bins, while GFR36-SST offers 3" flange to securely hold 3" and 6" wide Unit Dose Bins.



Carousel Bins

- > Features smooth label surface.
- > Dividable by length or width for maximum flexibility.
- > Manufactured from polypropylene.

Carousel Bins

Container Model	Outside Dimensions (L x W)	Inside Dimensions (L x W)	Overall Length (in)	Hopper Height (in)	Container Height (in)	Weight (lb)	Carton Quantity	Flat Label ID Area (W x H)	Width Dividers	Length Dividers
HCB1805-5*	18.0 x 5.0	14.8 x 4.1	16.1	2.6	5.1	1.2	20	4.3 x 1.0	WPT5*	LPT18*
HCB1810-5*	18.0 x 10.0	14.8 x 9.1	16.1	2.6	5.1	1.8	10	9.5 x 1.0	WPT10*	LPT18*
HCB1812-5*	18.0 x 11.9	14.8 x 11.1	16.1	2.6	5.1	2.0	10	11.0 x 1.0	WPT12*	LPT18*
HCB2206-5*	22.0 x 6.0	18.8 x 5.0	20.3	2.6	5.1	1.6	20	5.0 x 1.0	WPT6*	LPT22*
HCB2212-5*	22.0 x 11.9	18.8 x 11.0	20.3	2.6	5.1	2.4	10	11.0 x 1.0	WPT12*	LPT22*

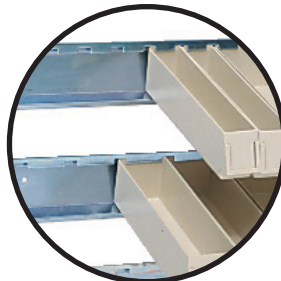
Unit Dose Bins

Container Model	Outside Dimensions (L x W)	Inside Dimensions (L x W)	Overall Length (in)	Hopper Height (in)	Container Height (in)	Weight (lb)	Carton Quantity	Flat Label ID Area (W x H)
UDB1203-2	11.9 x 2.0	10.7 x 1.8	10.7	2.7	2.8	0.3	50	1.6 x 1.5
UDB1203-3	11.9 x 3.0	10.7 x 2.6	10.7	2.7	2.8	0.3	30	2.8 x 1.5
UDB1203-6	11.8 x 6.0	10.7 x 5.6	10.7	2.7	2.8	0.5	12	2.8 x 1.5

Gravity Flow Rails

Model	Dimensions (in)		Quantity of Unit Dose Bins to fill GFR (Note: Please order bins separately.)		
	H	L	UDB1203-2	UDB1203-3	UDB1203-6
GFR36-2SST*	3.8	36.0	18	-	6
GFR36-SST*	3.8	36.0	-	12	6

* Available on a make-to-order basis. Please call for more information. **Available Stocked Color: ● Ivory



GFR36-2SST (top rail) shown with UDB1203-2. GFR36-SST (second rail) shown with UDB1203-3.

Unit Dose Bins

- > Molded-in cardholders for convenient identification of products.
- > Manufactured from high-impact polystyrene.

Dealer Contact Information