

# Wire Shelving Accessories

LEWISBins+ offers a wide variety of **Accessories** to add versatility to your wire shelving system. Choose from S-Hooks, Tapered Post Sleeves, Post Clamps, Foot Plates, Shelf Dividers and Shelf Ledges. These products are also stocked in ESD-safe material. (See page 35).

>> Use **S-Hooks** to add-on adjacent wire shelving units.

>> **Tapered Post Sleeves** snap securely into place. Shelf load strengthens grip on the post.

>> Use **Foot Plates** to bolt units to the floor for better stability. The foot plate replaces the leveling bolt.

>> **Post Clamps** join units together for maximum strength.

>> **Shelf Dividers** snap securely in place to separate shelf contents.

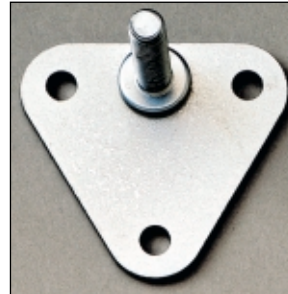
>> **Shelf Ledges** surround shelf perimeter to prevent stored items from falling off.



WS-Hook



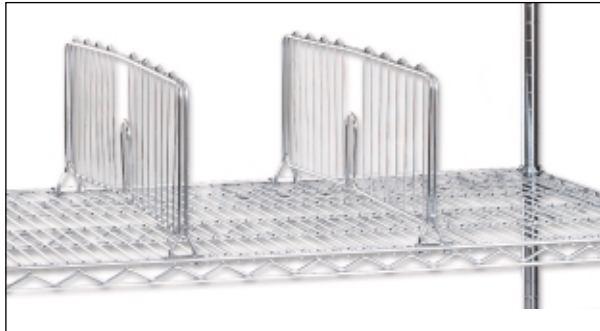
WP-Sleeve



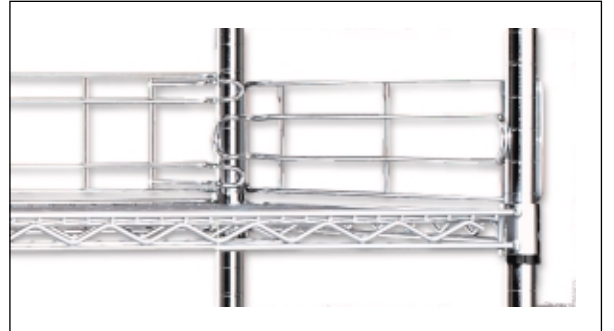
WF-Plate



WP-Clamp



Shelf Dividers



Shelf Ledges

## Accessory Description

Model	Description
WS-Hook	Add-on S-hook
WP-Sleeve	Tapered Post Sleeve
WP-Clamp	Post Clamp
WF-Plate	Foot Plate
WPL-Holder	3" Plastic Label Holder
WDB-35	3.5" Donut Bumper
WP5-S	5" Poly Swivel Stem Caster
WP5-SB	5" Poly Swivel/Brake Stem Caster
WP5-R	5" Poly Rigid Stem Caster
WR5-S	5" Rubber Swivel Stem Caster
WR5-SB	5" Rubber Swivel/Brake Stem Caster
WR5-R	5" Rubber Rigid Stem Caster

Stem casters are shipped with 3.5" donut bumper at no extra charge.

## Accessories

Model	Weight (lb)	Dimensions (in)	
		L	H
<b>Shelf Ledges</b>			
WL4-18	1.5	18.0	4.0
WL4-24	2.0	24.0	4.0
WL4-36	2.8	36.0	4.0
WL4-42	3.3	42.0	4.0
WL4-48	3.8	48.0	4.0
WL4-60	4.0	60.0	4.0
WL4-72	5.0	72.0	4.0
<b>Shelf Dividers</b>			
WD-18	2.3	18.0	7.0
WD-24	2.8	24.0	7.0
<b>Posts</b>			
W54	3.0	-	54.0
W63	3.5	-	63.0
W74	4.0	-	74.0
W86	5.0	-	86.0

# Distribution Containers



The **FliPak®** family offers multiple container sizes with attached hinged covers that prevent expensive loss of product. These containers stack when closed or nest when open to provide the most efficient use of available space on the manufacturing floor, in the warehouse, inside a truck trailer or in the back room of a retail outlet. **Nest-Only Containers** meet the diverse needs of many types of picking and storage applications in modern distribution systems. Containers are available with optional detached covers.

## FliPak Containers

- >> 1/4" or 3/8" diameter reinforced security holes are compatible with a variety of tote closures, from ties to padlocks.
- >> Traction-Action™ material available for improved impact resistance and conveyability.
- >> Quick-release label area on attached hinged cover and ends for easy reading and quick label exchange.
- >> Seven FliPak sizes now available in Clear: FP03, FP06, FP075, FP142, FP182, FP242 and FP261
- >> Visible area above nest stops for easy reading of sequential number when nested or stacked.
- >> Pebble-grain bottom surface provides excellent conveyor traction.
- >> Heavily reinforced hinge elements reduce break age and cracking.
- >> Cover recessed within the perimeter of container to protect against cover breakage while conveyed or shipped.

Add distribution efficiency, reduce product damage and maximize storage space.

- Pharmaceutical
- Electronics
- Food processing
- Healthcare
- Retail Distribution



## Distribution Containers

Model	Outside Dimensions				Inside Dimensions				Total Height	Product Clearance	Container Weight (lb.)	Volume (cu. ft.)	Load Max (lb.)	Bottom Container Support Wt. (lb.)	Nest Ratio
	Top		Bottom		Top		Bottom								
	L	W	L	W	L	W	L	W							
<b>FliPak Containers</b>															
FP03	11.8	9.8	9.3	7.0	10.1	7.8	8.7	6.4	7.7	6.5	2.1	0.3	70	230	2.8:1
FP06	15.2	10.9	12.8	7.8	13.8	8.9	12.2	7.3	9.7	8.8	3.0	0.6	70	400	4.0:1
FP075	19.7	11.8	16.9	9.3	17.7	10.1	16.2	8.6	7.3	6.0	3.4	0.7	70	460	3.0:1
FP142	21.8	15.2	19.1	13.5	19.9	14.2	18.5	12.9	9.8	8.7	5.9	1.4	70	700	4.4:1
FP151*	22.3	13.0	19.1	10.9	20.1	11.4	18.9	10.1	12.8	12.5	6.2	1.6	70	250	3.8:1
FP182	21.8	15.2	18.6	12.9	19.8	14.0	18.1	12.3	12.9	11.8	6.5	1.8	70	700	4.0:1
FP242	26.9	17.1	24.3	14.6	25.3	15.5	23.4	13.9	12.6	11.5	8.2	2.4	70	700	4.2:1
FP261	23.9	19.6	21.1	17.1	22.2	18.2	20.6	16.5	12.6	11.5	8.4	2.7	70	250	5.3:1
FP402*	27.9	20.6	25.8	18.7	26.0	19.0	25.0	18.0	15.6	14.0	12.7	4.0	75	733	2.7:1
<b>Nest-Only Containers and Covers</b>															
RN02115-12	21.4	15.3	18.6	12.6	20.2	14.2	18.4	12.4	12.3	12.0	4.6	2.00	-	-	4.0:1
NO2420-12	23.9	19.6	21.1	17.7	22.2	18.2	20.5	16.5	12.0	11.9	5.7	2.70	-	-	5.3:1
CNO2115-1 (cover)	21.4	15.3	N/A	N/A	N/A	N/A	N/A	N/A	1.3	N/A	1.6	N/A	N/A	N/A	N/A
RCNO2420-1 (cover)	23.7	19.7	N/A	N/A	N/A	N/A	N/A	N/A	1.1	N/A	2.3	N/A	N/A	N/A	N/A

Available Stocked FliPak Colors: ● Grey ● Blue ○ Clear

Available Stocked Nest-Only Colors: ● Grey

\* Unavailable in Clear.